

# NEW PRODUCTS

March 2023



Switches



Routers



**D-Link<sup>®</sup>**

# Managed L3 Data Center Switches



## 5000 Series

- Wide variety of high-speed interface combinations  
10G/25G/40G/100G
- 802.1Qau, 802.1Qbb, 802.1Qaz Data Center Bridging (DCB) features
- Support Virtual eXtensible LAN (VXLAN) network virtualisation
- Quad-core CPU Intel Rangeley C2558 (2.4 GHz)
- MAC address table up to 288K\* entries
- Support OpenFlow v1.3
- Support IGMP v1/v2/v3, MLD v1/v2, PIM-SM/DM/SSM, DVMRPv3
- OSPF, BGP4/4+, Graceful Restart, Bidirectional Forwarding Detection

\* Depending on the switch model

# 5000 Series Switches



DQS-5000-32Q28



DQS-5000-32S



DQS-5000-54S Q28



DXS-5000-54S

## Ports Configuration

32 x 100G QSFP28  
USB 2.0  
Console RJ-45  
MGMT RJ-45 1000Base-T

32 x 40G QSFP+  
USB 2.0  
Console RJ-45  
MGMT RJ-45 1000Base-T

48 x 25G SFP28  
6 x 100G QSFP28  
USB 2.0  
Console mini-USB  
MGMT RJ-45 1000Base-T

48 x 10G SFP+  
6 x 40G QSFP+  
USB 2.0  
Console mini-USB  
MGMT RJ-45 1000Base-T

## Switch Capacity

6.4 Tbps

2.56 Tbps

3.6 Tbps

1.44 Tbps

## Max. Packet Forwarding Rate

2,980 Mpps

1,428 Mpps

2,380 Mpps

1,071 Mpps

# Modular Fan and Power Supply Design



## DXS-PWR550AC

- AC hot-swappable power module (550 W) for 1+1 redundancy and load sharing

## DXS-FAN5K

- Modular N+1 hot-swappable fan with front-to-back airflow

# Layer 2 Smart Managed PoE Switches

## DGS-1100V2 Series

- PoE 802.3af/802.3at/802.3bt\* compliant
- Auto Surveillance VLAN and Voice VLAN support
- Static MAC, IGMP Snooping
- STP/RSTP, Loopback Detection
- Cable diagnostics
- Energy saving D-Link Green Technology
- Effortless management with web-based GUI and D-Link Network Assistant

\* Depending on the switch model



# DGS-1100V2 Series Switches



DGS-1100-10MPV2



DGS-1100-10MPPV2



DGS-1100-18PV2



DGS-1100-26MPV2



DGS-1100-26MPPV2

## Ports Configuration

8 x 10/100/1000Base-T PoE  
2 x 1000Base-X SFP

8 x 10/100/1000Base-T PoE  
2 x 1000Base-X SFP

16 x 10/100/1000Base-T PoE  
2 x 1000Base-T/SFP

24 x 10/100/1000Base-T PoE  
2 x 1000Base-T/SFP

24 x 10/100/1000Base-T PoE  
2 x 1000Base-T/SFP

## Switch Capacity

20 Gbps

20 Gbps

36 Gbps

52 Gbps

52 Gbps

## PoE Standart

802.3af/at  
(30W PoE per port)

802.3af/at/bt  
(30W PoE per port for ports 1-6,  
90W PoE per port for ports 7-8)

802.3af/at  
(30W PoE per port)

802.3af/at  
(30W PoE per port)

802.3af/at/bt  
(30W PoE per port for ports 1-20,  
90W PoE per port for ports 21-24)

## PoE Power Budget

130 W

242 W

130 W

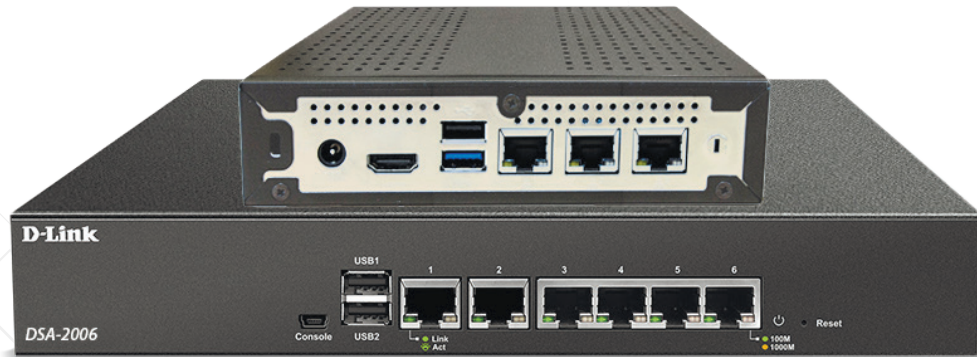
370 W

525 W

# Service Routers

DSA-2003

DSA-2006



- Flexible firewall configuration
- Protected network perimeter
- Link Failover and Load Balancing
- PPTP/L2TP, IPSec, L2TP over IPSec, GRE, IPIP, EoGRE, L2TPv3 (unmanaged) VPN tunnels
- Rule-based filtering
- Monitoring of network settings (SLA)

# Service Routers

	DSA-2003	DSA-2006
CPU	Dual Core Intel Atom 1,33 GHz	Dual Core Intel Atom 1,74 GHz
RAM / Flash	8 GB, DDR3L / 4 GB, eMMC	2 GB, DDR3 / 4 GB, eMMC
Ports Configuration	3 configurable Gigabit WAN/LAN ports	6 configurable Gigabit WAN/LAN ports
USB	1 USB 3.0 1 USB 2.0	2 USB 2.0
3G/LTE modem support	v	v
Print Server	v	v



# Wireless AC1200 Wave2 Gigabit Router with MU-MIMO and EasyMesh support

DIR-842/R5

- AC1200 speeds up to 300 Mbps (2.4 GHz) & 867 Mbps (5 GHz)
- 2 x 2 MU-MIMO, TX Beamforming
- Guest Wi-Fi, WPA3, ad blocking function
- PPTP/L2TP/IPsec VPN tunnels
- Built-in SkyDNS web content filtering service
- TR-069 client
- Configuration and management via mobile application D-Link Assistant



1 x 1000Base-T WAN port  
4 x 1000Base-T LAN ports

1 GHz CPU  
128 MB DDR2 RAM  
128 MB SPI NAND Flash

# Wireless AX1800 Dual Band Gigabit Router with Wi-Fi 6 802.11ax



1 x 1000Base-T WAN port  
3 x 1000Base-T LAN ports

880 MHz CPU  
256 MB DDR3L SDRAM  
128 MB NAND Flash

## DIR-X1860

- For Internet plans up to 1 Gbps
- AX1800 speeds up to 574 Mbps (2.4 GHz) & 1201 Mbps (5 GHz)
- 2 x 2 MU-MIMO, TX Beamforming
- Guest Wi-Fi, WPA3
- PPTP/L2TP/L2TP over IPsec/IPsec VPN tunnels
- Web filtering, ad blocking function
- D-Link Assistant mobile app for configuration and management